

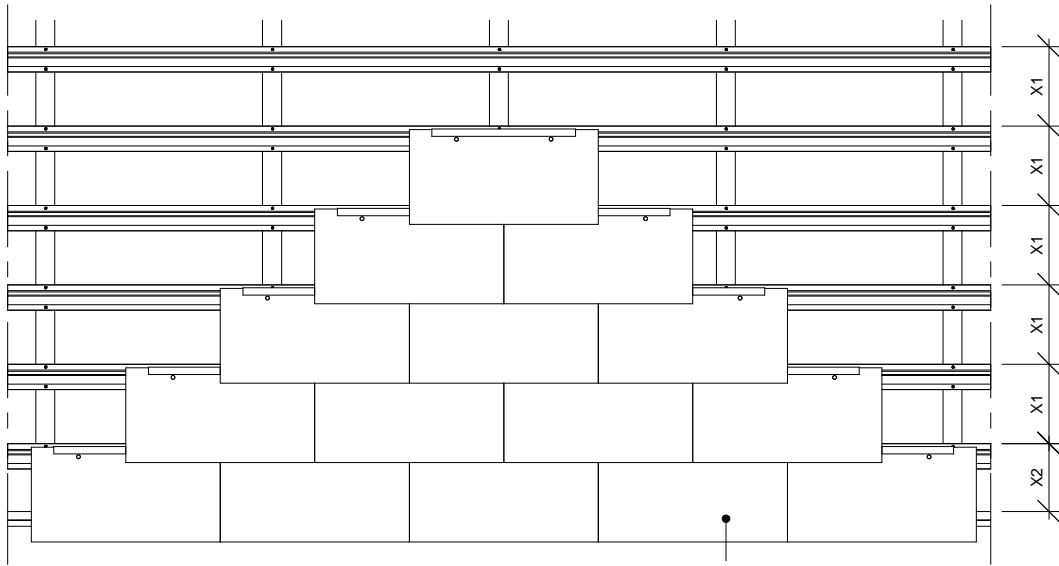
Details

KOMPROMENT

Danish Building Design

D-WALL





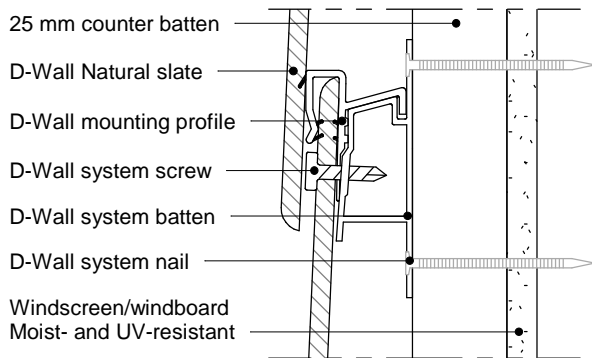
Elevation

1 : 20

At the bottom, the first batten must be mounted according to detail D-7

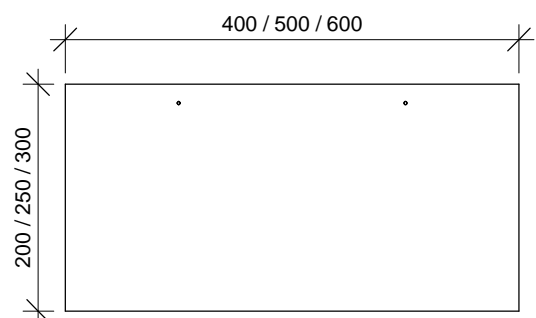
Batten Distance:

Slate size:	X1	X2	Overlay	Slate/m ²
200x400 mm	160 mm	125 mm	40 mm	15,63 pcs/m ²
250x500 mm	210 mm	180 mm	40 mm	9,52 pcs/m ²
300x600 mm	260 mm	215 mm	40 mm	6,41 pcs/m ²



Cut

1 : 2



Natural slate

1 : 10

The drawing is not to scale. All dimension are in mm. Copyright © Komproment Danish Building Design

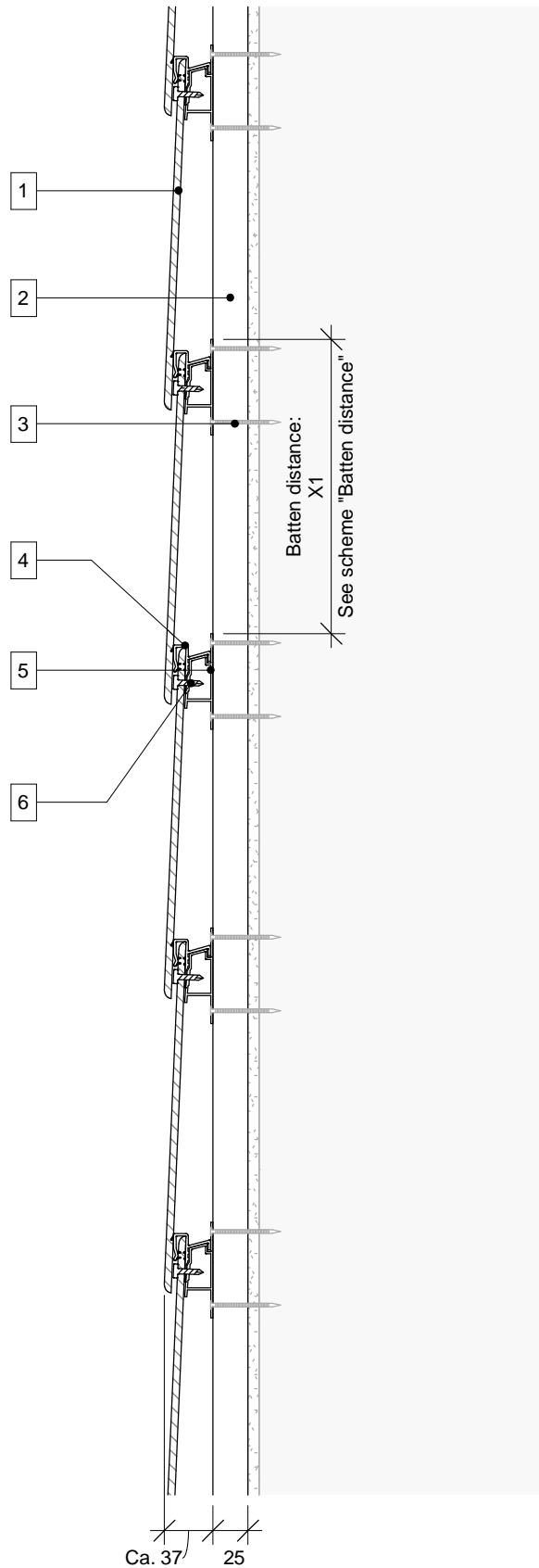
D-WALL

Date: 02-06-2017

Tlf: +45 96520710 Fax: +45 96520111
E-Mail: Teknik@komproment.dk
Web: www.komproment.dk

D-0

As indicated



- 1 Natural slate 4-7 mm, PH Barcelona Silver White
- 2 Counter batten 25 mm wood or aluminium
- 3 D-wall system nail
- 4 D-wall mounting profile
- 5 D-wall system batten
- 6 D-wall system screw

Batten distance:

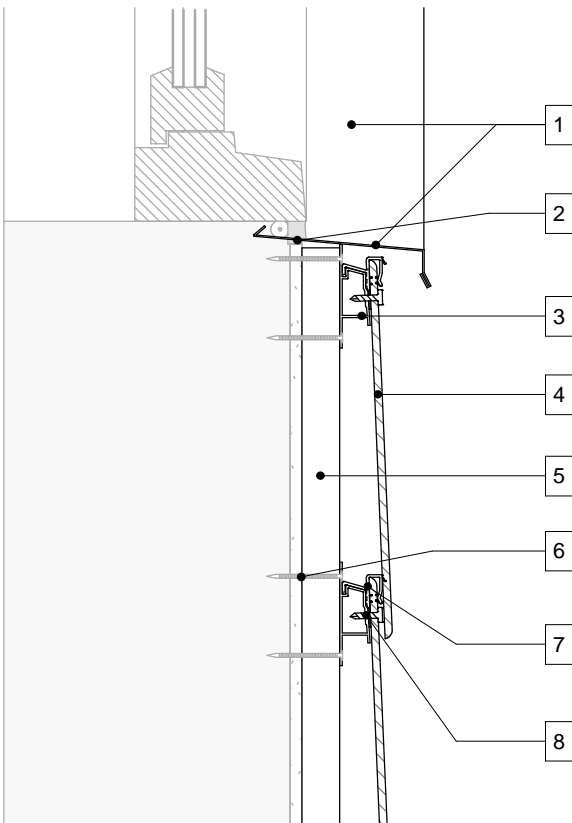
Slate size:	X1	Overlay	Slate/m2
200x400 mm	160 mm	40 mm	15,63 pcs/m2
250x500 mm	210 mm	40 mm	9,52 pcs/m2
300x600 mm	260 mm	40 mm	6,41 pcs/m2

The drawing is not to scale. All dimension are in mm. Copyright © Komproment Danish Building Design

Vertical cut

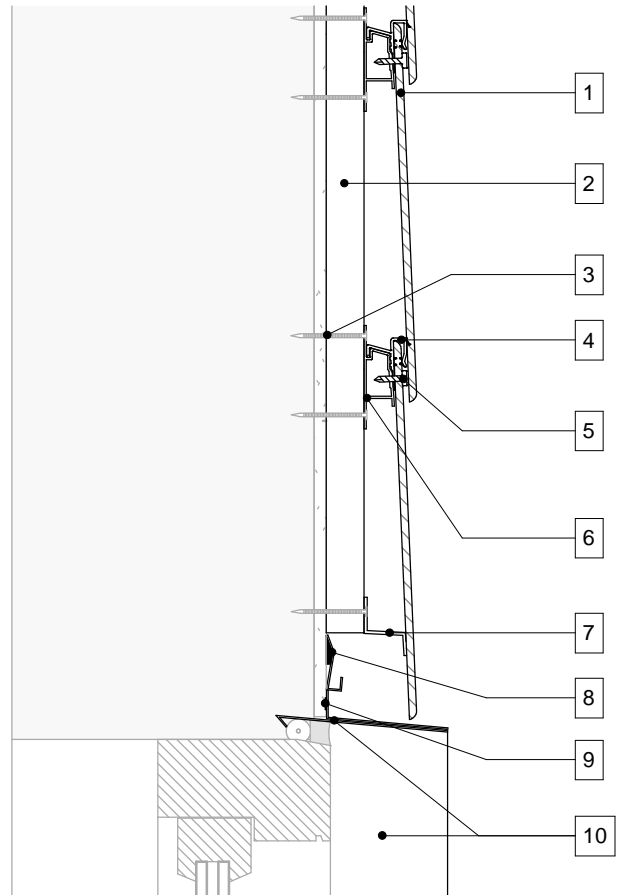
Date: 02-06-2017 Tlf: +45 96520710 Fax: +45 96520111
 E-Mail: Teknik@komproment.dk
 Web: www.komproment.dk

D-1 1 : 5 **D-WALL**



Bottom window

- 1 Window flashing bottom/side
- 2 Façade adhesive
- 3 D-wall system batten
- 4 Natural slate 4-7 mm, PH Barcelona Silver White
- 5 Counter batten 25 mm wood or aluminium
- 6 D-wall system nail
- 7 D-wall mounting profile
- 8 D-wall system screw



Top window/door

- 1 Natural slate 4-7 mm, PH Barcelona Silver White
- 2 Counter batten 25 mm Wood or aluminium
- 3 D-wall system nail
- 4 D-wall mounting profile
- 5 D-wall system screw
- 6 D-wall system batten
- 7 Start batten
- 8 Drainage gutter - mechanically fixed and sealed
- 9 Façade adhesive
- 10 Window flashing top/side

The drawing is not to scale. All dimension are in mm. Copyright © Komproment Danish Building Design

Window/door vertical cut

Date: 02-06-2017

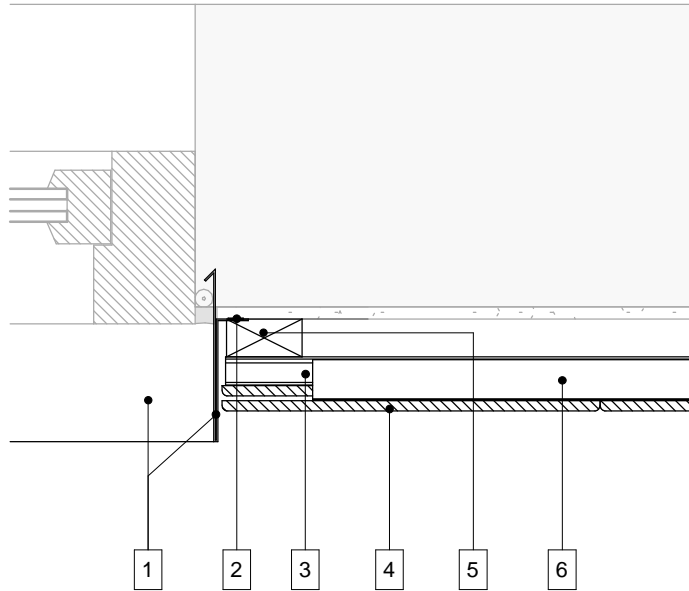
Tlf: +45 96520710 Fax: +45 96520111
E-Mail: Teknik@komproment.dk
Web: www.komproment.dk

D-3

1 : 5

D-WALL

KOMPROMENT
DANISH BUILDING DESIGN



- 1 Window flashing bottom/side
- 2 Façade adhesive
- 3 D-wall system batten
- 4 Natural slate 4-7 mm, PH
Barcelona Silver white
- 5 Counter batten 25 mm
Wood or aluminium
- 6 D-wall mounting profile

The drawing is not to scale. All dimension are in mm. Copyright © Komproment Danish Building Design

Window/door horisontal cut

Date: 02-06-2017

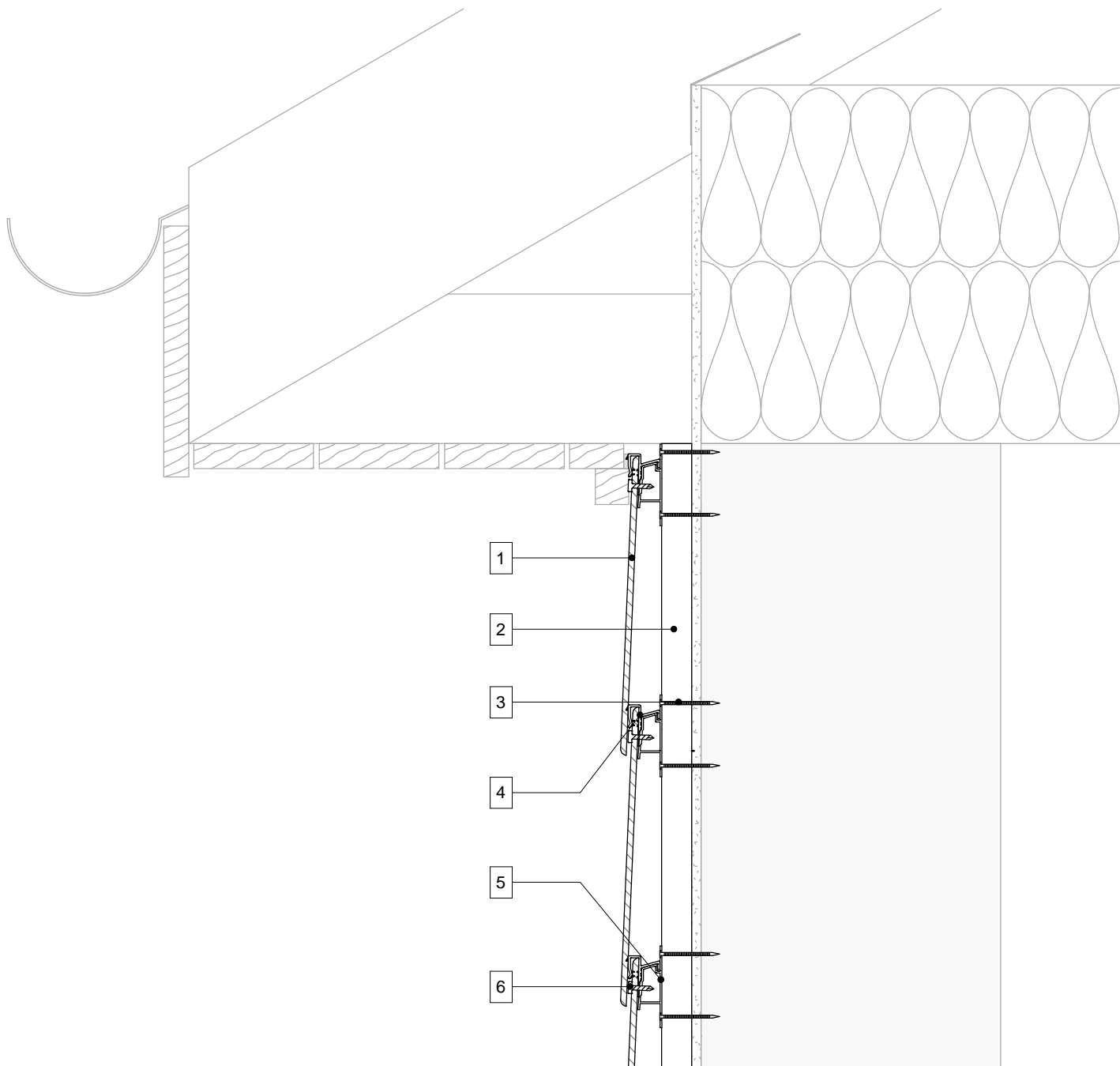
Tlf: +45 96520710 Fax: +45 96520111
E-Mail: Teknik@komproment.dk
Web: www.komproment.dk

D-4

1 : 5

D-WALL

KOMPROMENT
DANISH BUILDING DESIGN



- 1 Natural slate 4-7 mm, PH Barcelona Silver White
- 2 Counter batten 25 mm wood or aluminium
- 3 D-wall system nail
- 4 D-wall mounting profile
- 5 D-wall system batten
- 6 D-wall system screw

The drawing is not to scale. All dimension are in mm. Copyright © Komproment Danish Building Design

Connection roof/facade v. 1

Date: 02-06-2017

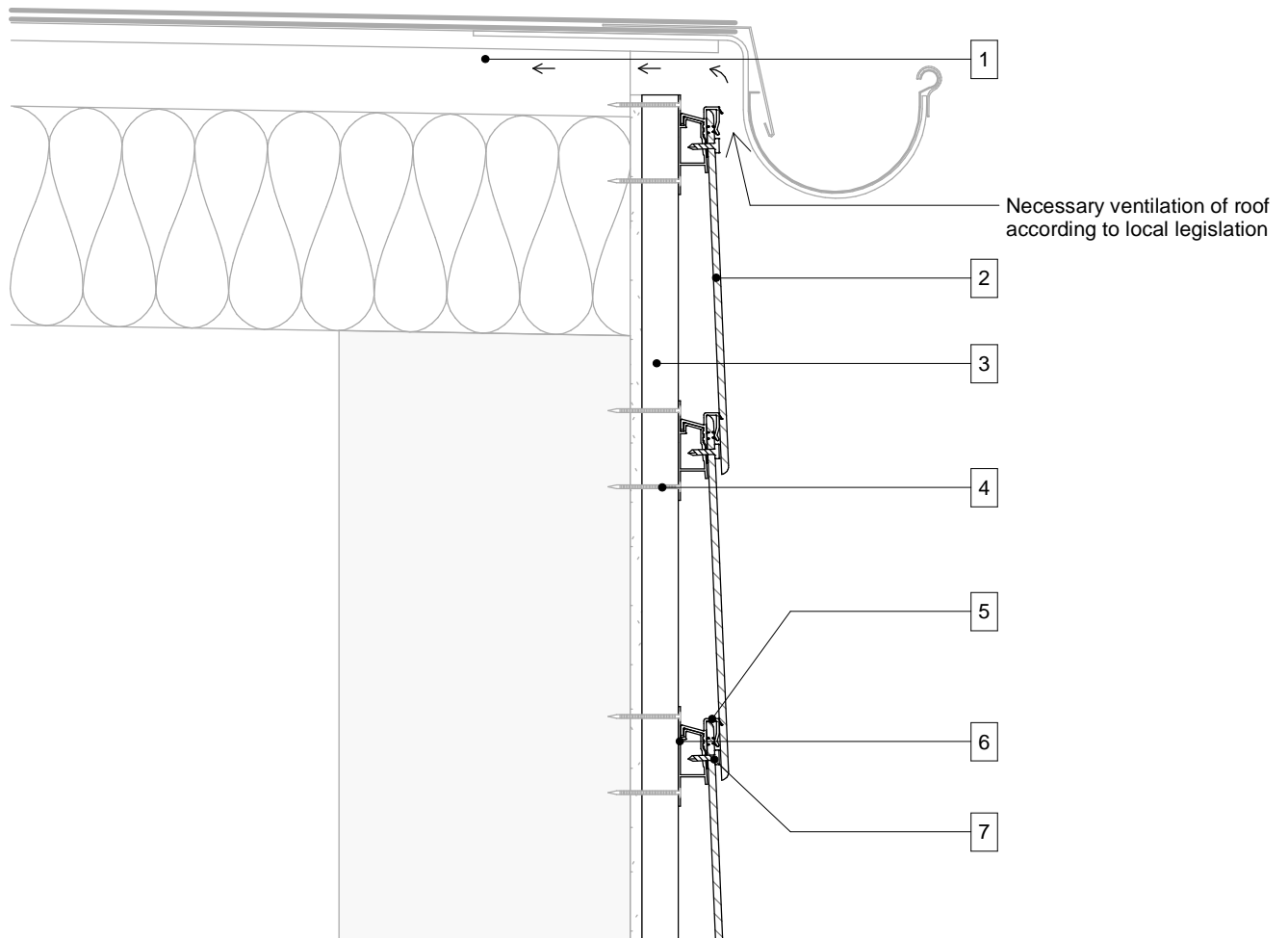
Tlf: +45 96520710 Fax: +45 96520111
E-Mail: Teknik@komproment.dk
Web: www.komproment.dk

D-5

1 : 5

D-WALL

KOMPROMENT
DANISH BUILDING DESIGN



- 1 Ventilated roof construction
- 2 Natural slate 4-7 mm, PH Barcelona Silver White
- 3 Counter batten 25 mm Træ eller aluminium
- 4 D-wall system nail
- 5 D-wall mounting profile
- 6 D-wall system batten
- 7 D-wall system screw

The drawing is not to scale. All dimension are in mm. Copyright © Komproment Danish Building Design

Connection roof/facade v. 2

Date: 02-06-2017

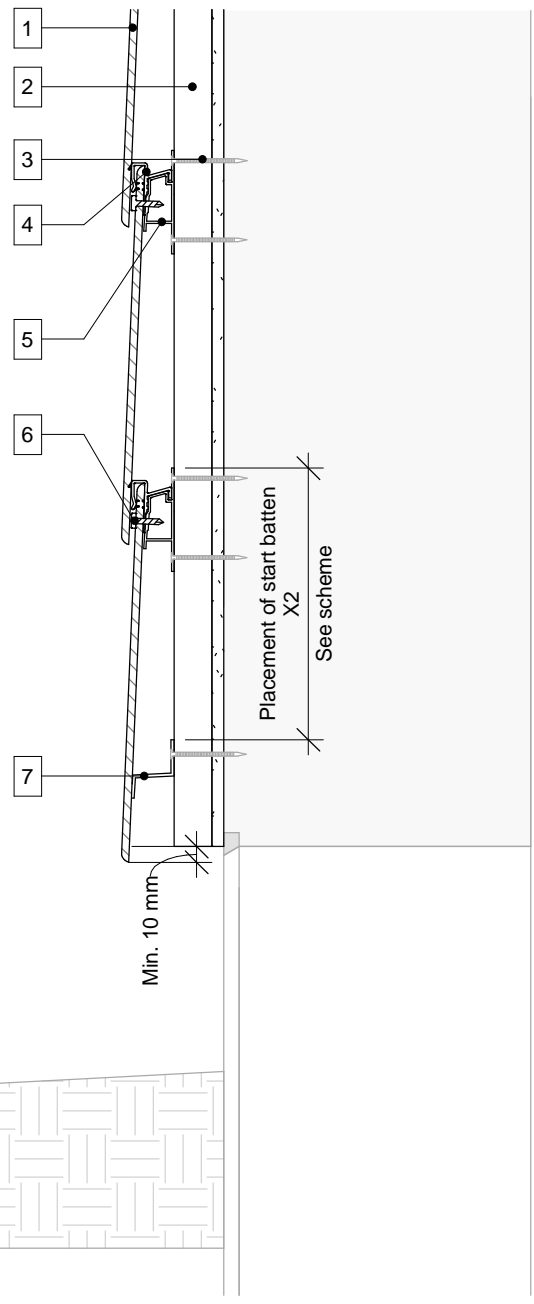
Tlf: +45 96520710 Fax: +45 96520111
E-Mail: Teknik@komproment.dk
Web: www.komproment.dk

D-6

1 : 5

D-WALL

KOMPROMENT
DANISH BUILDING DESIGN



- 1 Natural slate 4-7 mm, PH Barcelona Silver white
- 2 Counter batten 25 mm wood or aluminium
- 3 D-wall system nail
- 4 D-wall mounting profile
- 5 D-wall system batten
- 6 D-wall system screw
- 7 Start batten

Placement start batten:

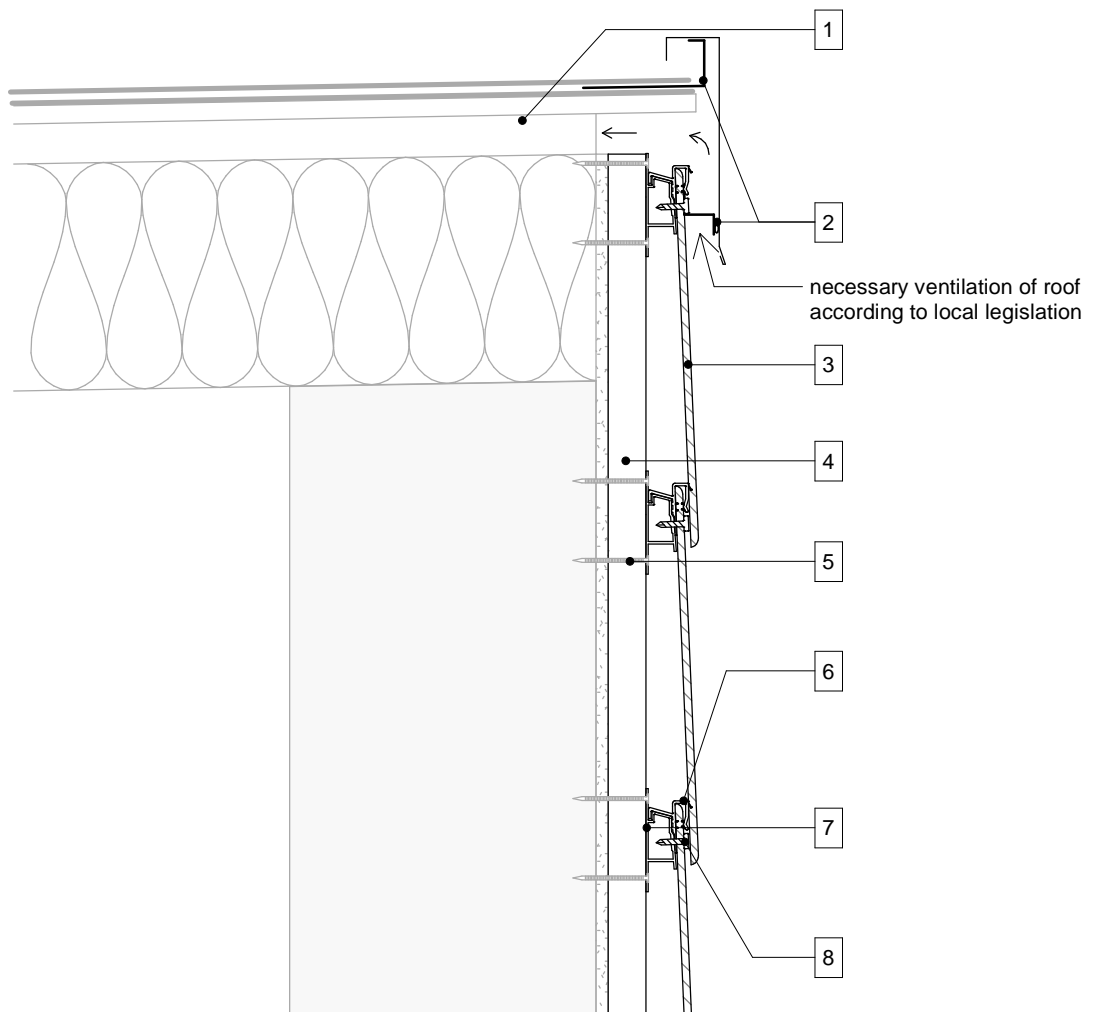
Slate size:	X2
200x400 mm	125 mm
250x500 mm	180 mm
300x600 mm	215 mm

The drawing is not to scale. All dimension are in mm. Copyright © Komproment Danish Building Design

Start façade

Date: 02-06-2017 Tlf: +45 96520710 Fax: +45 96520111
 E-Mail: Teknik@komproment.dk
 Web: www.komproment.dk

D-7 1 : 5 **D-WALL**



- 1 Ventilated roof construction
- 2 Top elements (project specified)
- 3 Natural slate 4-7 mm, PH Barcelona Silver White
- 4 Counter batten 25 mm wood or aluminium
- 5 D-wall system nail
- 6 D-wall mounting profile
- 7 D-wall system batten
- 8 D-wall system screw

The drawing is not to scale. All dimension are in mm. Copyright © Komproment Danish Building Design

With air vent.

Date: 02-06-2017

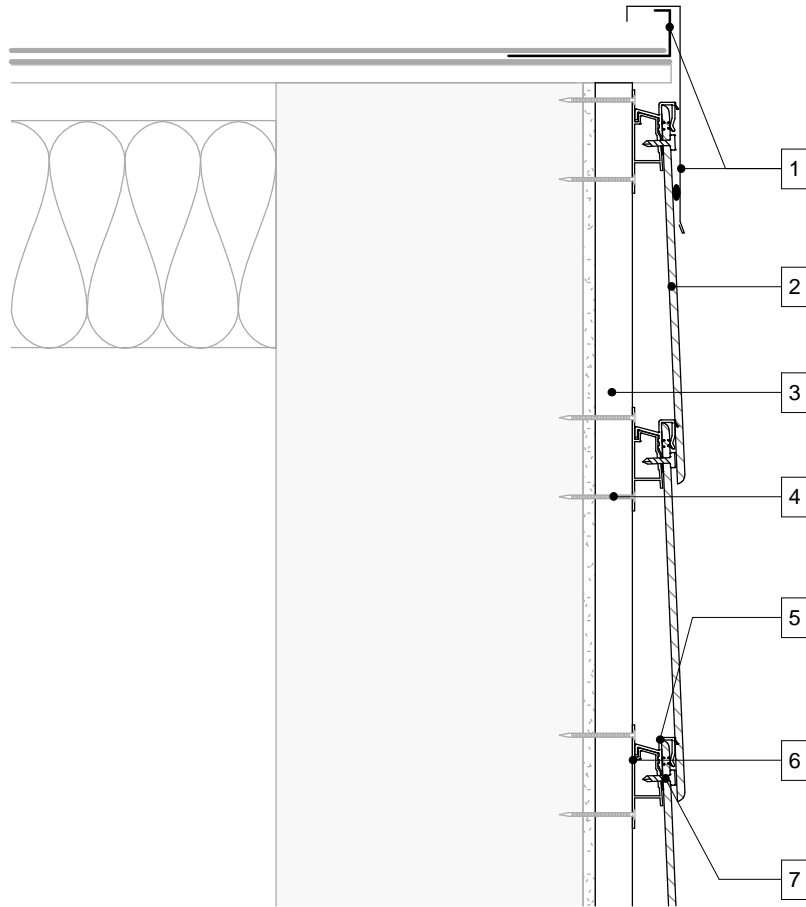
Tlf: +45 96520710 Fax: +45 96520111
E-Mail: Teknik@komproment.dk
Web: www.komproment.dk

D-8

1 : 5

D-WALL

KOMPROMENT
DANISH BUILDING DESIGN



- 1 Top elements
(Project specified)
- 2 Natural slate 4-7 mm, PH
Barcelona Silver White
- 3 Counter batten 25 mm
wood or aluminium
- 4 D-wall system nail
- 5 D-wall mounting profile
- 6 D-wall system batten
- 7 D-wall system screw

The drawing is not to scale. All dimension are in mm. Copyright © Komproment Danish Building Design

without air vent.

Date: 02-06-2017

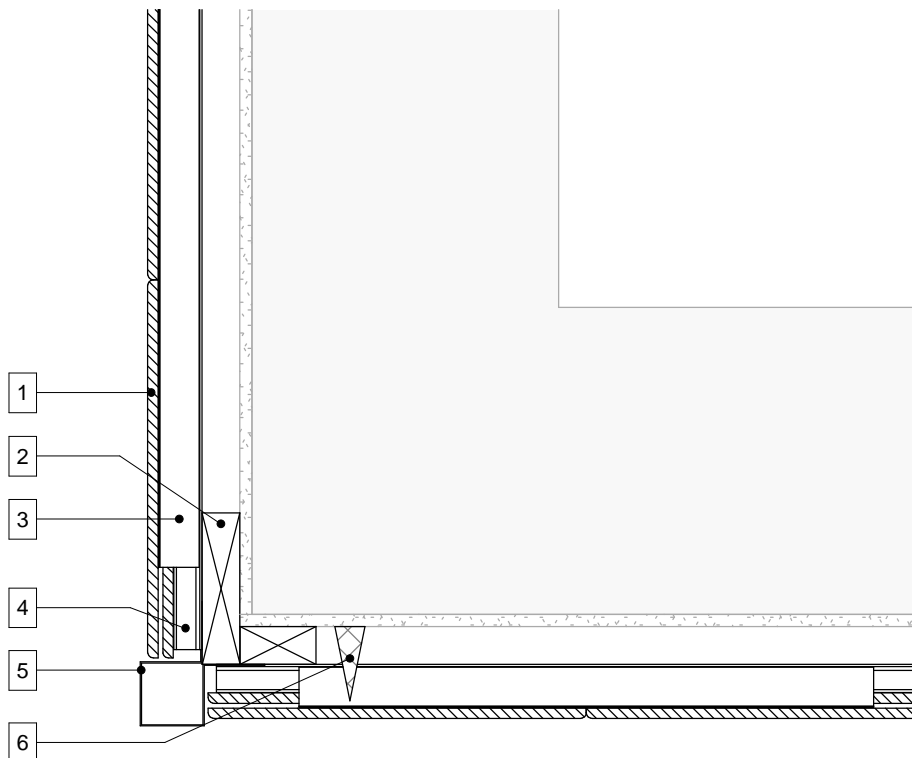
Tlf: +45 96520710 Fax: +45 96520111
E-Mail: Teknik@komproment.dk
Web: www.komproment.dk

D-9

1 : 5

D-WALL

KOMPROMENT
DANISH BUILDING DESIGN



- 1 Natural slate 4-7 mm, PH
Barcelona Silver white
- 2 Counter batten 25 mm
Træ eller aluminium
- 3 D-wall mounting profile
- 4 D-wall system batten
- 5 Corner profile aluminium
mounted on counter battens per 250 mm
- 6 Element for separating facades (wind stop)

The drawing is not to scale. All dimension are in mm. Copyright © Komproment Danish Building Design

External corner with alu profile

Date: 02-06-2017

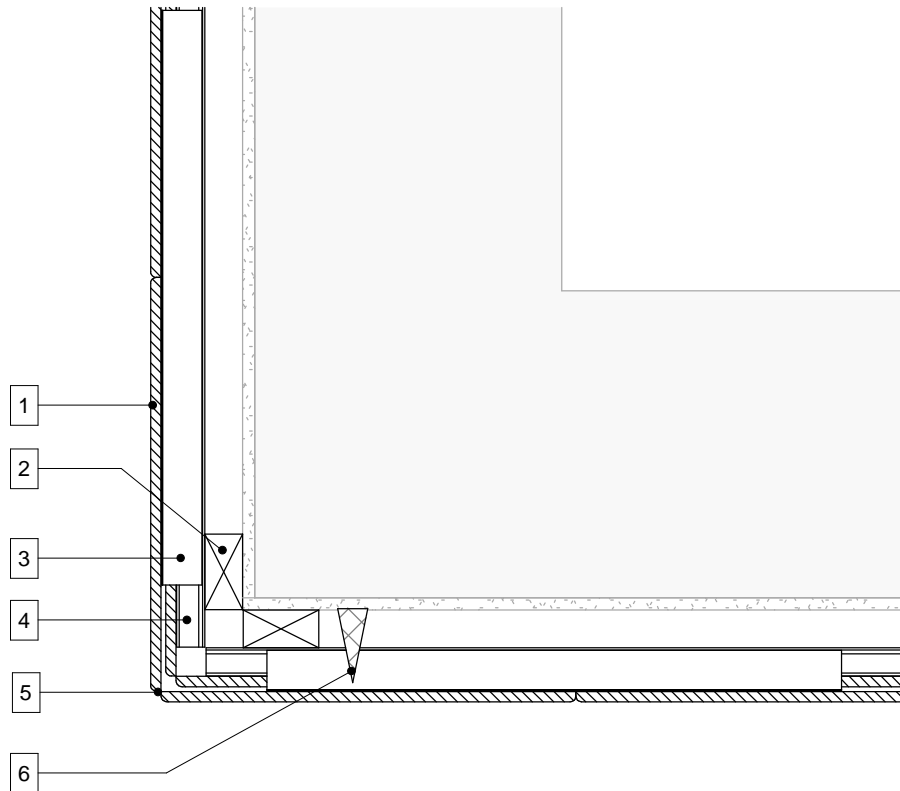
Tlf: +45 96520710 Fax: +45 96520111
E-Mail: Teknik@komproment.dk
Web: www.komproment.dk

D-10

1 : 5

D-WALL

KOMPROMENT
DANISH BUILDING DESIGN



- 1 Natrual slate 4-7 mm, PH
Barcelona Silver white
- 2 Counter batten 25 mm
wood or aluminium
- 3 D-wall mounting profile
- 4 D-wall system batten
- 5 Natural slate, adjusted to corner
- 6 Element for seperating facades (wind stop)

The drawing is not to scale. All dimension are in mm. Copyright © Komproment Danish Building Design

External corner

Date: 02-06-2017

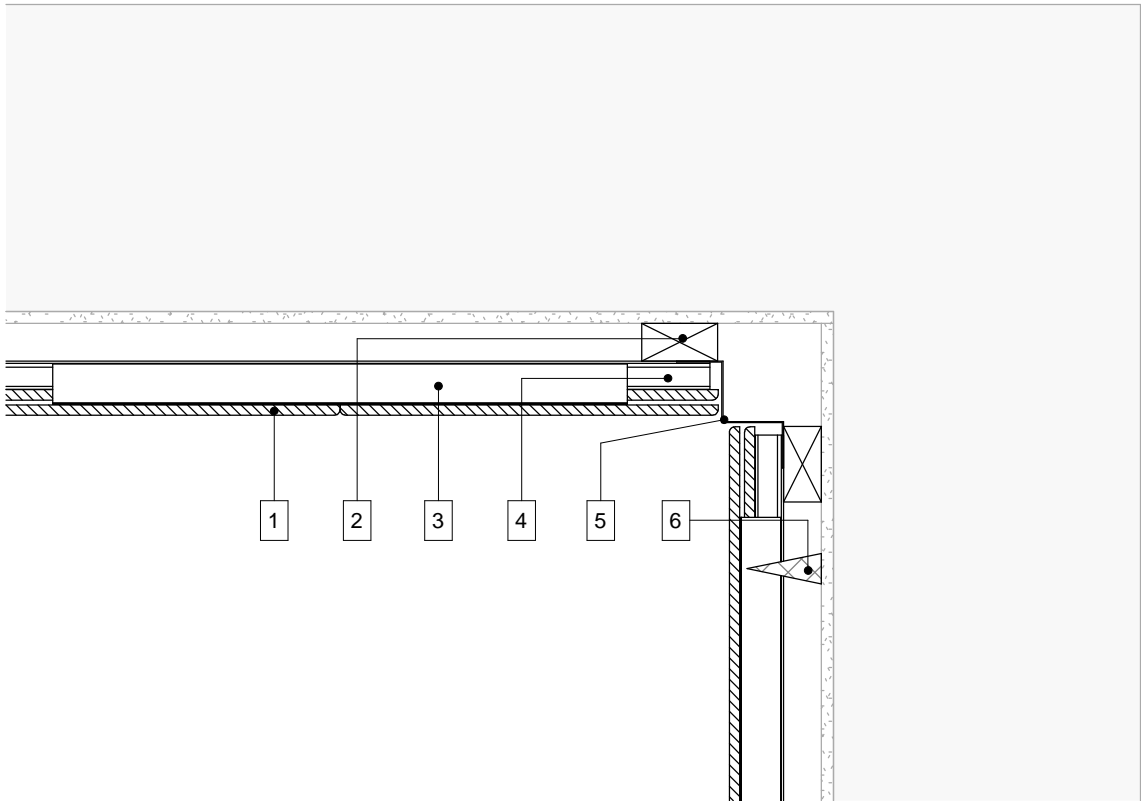
Tlf: +45 96520710 Fax: +45 96520111
E-Mail: Teknik@komproment.dk
Web: www.komproment.dk

D-11

1 : 5

D-WALL

KOMPROMENT
DANISH BUILDING DESIGN



- 1 Natural slate 4-7 mm, PH
Barcelona Silver white
- 2 Counter batten 25 mm
wood or aluminium
- 3 D-wall mounting profile
- 4 D-wall systembatten
- 5 Corner profile aluminium
mounted on counter battens per 250 mm
- 6 Element for seperating facades (wind stop)

The drawing is not to scale. All dimension are in mm. Copyright © Komproment Danish Building Design

Internal corner with alu profile

Date: 02-06-2017

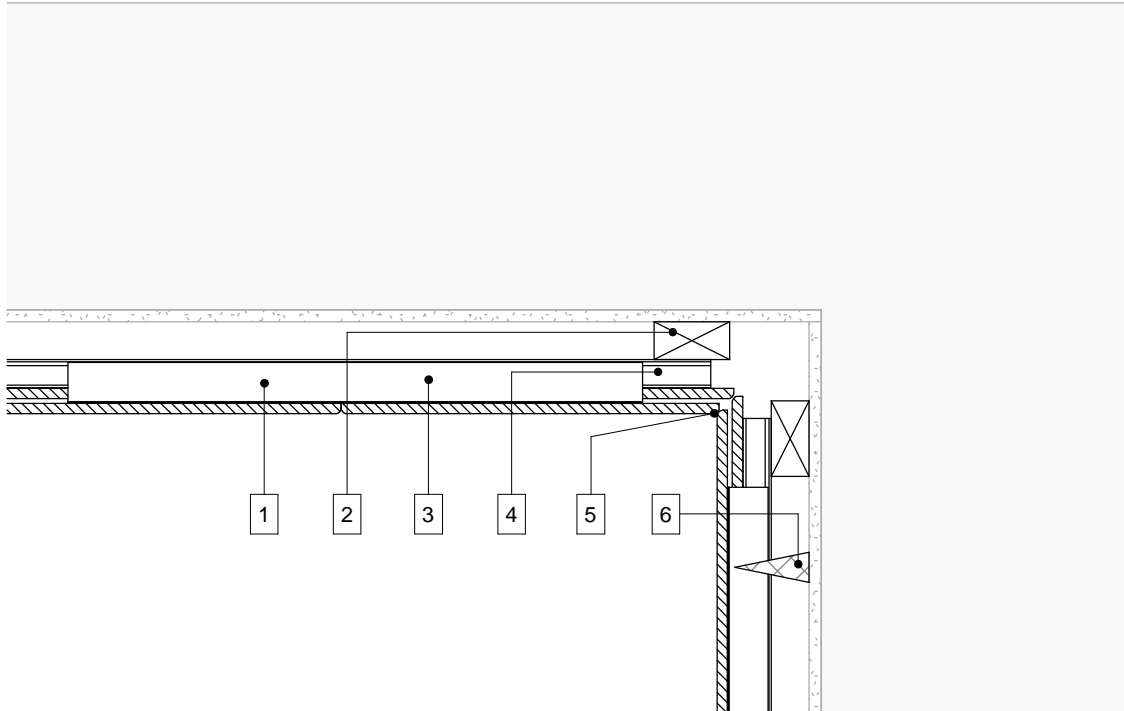
Tlf: +45 96520710 Fax: +45 96520111
E-Mail: Teknik@komproment.dk
Web: www.komproment.dk

D-12

1 : 5

D-WALL

KOMPROMENT
DANISH BUILDING DESIGN



- 1 Natural slate 4-7 mm, PH
Barcelona Silver white
- 2 Counter batten 25 mm
wood or aluminium
- 3 D-wall mounting profile
- 4 D-wall system batten
- 5 Natural slate, adjusted to corner
- 6 Element for seperating facades (wind stop)

The drawing is not to scale. All dimension are in mm. Copyright © Komproment Danish Building Design

Internal corner

Date: 02-06-2017

Tlf: +45 96520710 Fax: +45 96520111
E-Mail: Teknik@komproment.dk
Web: www.komproment.dk

D-13

1 : 5

D-WALL

KOMPROMENT
DANISH BUILDING DESIGN