

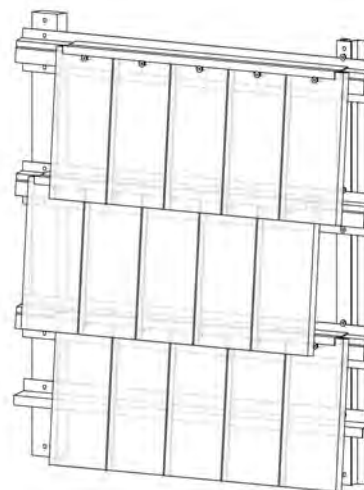
# VIDAR CLAY SHINGLES – WESTERWALD

## DATASHEET

Version 4, June 2018

### GENERAL INFORMATION

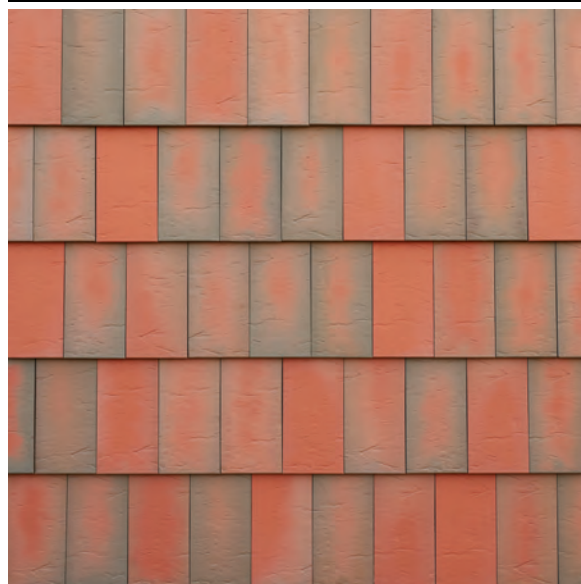
<b>Product name</b>	Vidar Clay Shingles Westerwald
<b>Colour</b>	Red-brown reduced
<b>Surface</b>	Rustic/grooved
<b>Item no.</b>	60-25-1
<b>Packing</b>	1140 pcs. per. euro pallet
<b>Weight per shingle</b>	Estimated 800 g/pcs
<b>System weight per sqm</b>	Estimated 39 kg/sqm
<b>Pcs. per sqm</b>	43 pcs.



### TECHNICAL DATA

<b>Water absorption</b>	< 3,0 %
<b>Size</b>	240 mm x 113 mm x 14 mm (± 4 mm)
<b>Fire class</b>	A1 (Only the clay shingle)

### PRODUCT PICTURES - See next page for larger pictures.



SURFACE A



SURFACE B

Reference facades, photographs and samples of Vidar should always be considered as guidelines. Colors and structures may vary.

**KOMPROMENT**  
DANISH BUILDING DESIGN

# VIDAR CLAY SHINGLES - WESTERWALD

DATASHEET

Version 4, June 2018

## SURFACE A - Rustic

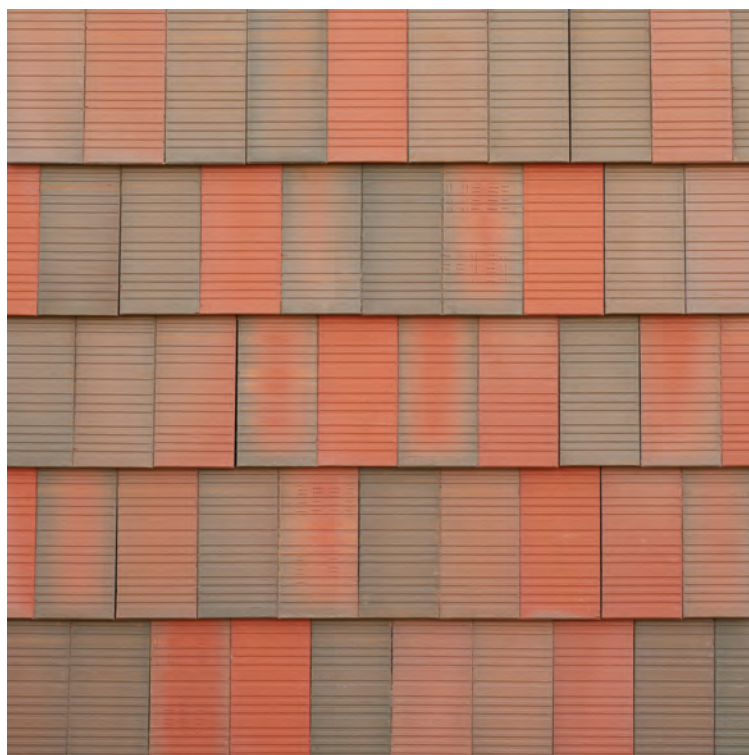
---



Reference facades, photographs and samples of Vidar should always be considered as guidelines. Colors and structures may vary.

## SURFACE B - Grooved

---



Reference facades, photographs and samples of Vidar should always be considered as guidelines. Colors and structures may vary.

Due to the production method, pinholes will occur on surface B

**KOMPROMENT**  
DANISH BUILDING DESIGN